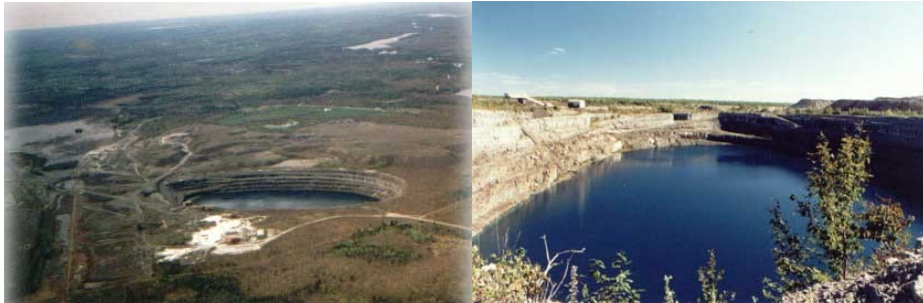


ComfortCountry Destination Tours

Heritage Tour

Marmora

The Marmora Mine



The Marmora Mine opened in 1955 to supply iron ore pellets to Bethlehem Steel Mills in Buffalo, N.Y. When it closed in 1979, it left a pit more than 200m (656ft.) deep, covering 34 hectares (85 acres at the surface). It is filling up with water, mainly from underground streams. The view overlooking the mine is nothing short of spectacular! You'll find the lookout at the end of Marmora Mine Road, which runs south off Hwy# 7, just east of the Village of Marmora. The area around the mine is connected with trails utilized by recreational vehicles in all seasons. From atop of the mine you can get a bird's eye view of Marmora!

Contact Information

Phone: (613) 472-1515

Website: www.ruralroutes.com/1299.html

Driving Directions

From the 401, take exit 543 and follow Hwy 62 north to Hwy 14. Turn northwest to Stirling, and then straight on to Marmora, 22 km. north on Hwy 14. At the lights in Marmora, turn right and drive 1.5 km, and turn right at the Marmora Mine turnoff.

Madoc

O'Hara Mill Homestead



Nature and history meet here! Explore the area's hiking trails, catch glimpses of machinery from the past, tour historic buildings, and experience a step back in time.

The O'Hara family occupied the land for nearly 120 years. The grounds contain eight historic buildings; five of the structures still stand in their original location. Tour the old O'Hara homestead, which was built in 1848, and see original furniture and artifacts, most of them handcrafted over 100 years ago in the adjacent woodworking shop. In addition to the homestead and woodworking shop, the original sites also include a sawmill and a carriage house. The O'Hara Mill schoolhouse, blacksmith shop and a collection of agricultural machinery displayed in two sheds are additions to the site.

Seasonal events include pioneer demonstrations of weaving, spinning, blacksmithing, and woodworking to only name a few. Enjoy your picnic lunch by the mill stream. Guided tours of buildings and hikes on the beautiful nature trails will be offered on special days. The homestead grounds and hiking trails can be enjoyed year round.

For more information, please call (613) 473-2084

Driving Directions

1.5 km north of Madoc on Hwy 62, then west on Mill Road for 2 km to 638 Mill Road

Tweed

Tweed Heritage Centre



Discover Tweed Now and Then! Visit the restored Houston House (1897), and discover the offers of this one stop comprehensive presentation of Tweed's heritage, both current and past. The Welcome and Information Bureau provides service to both visitors and local residents. The Miklejohn Reference Room and Morton Archives serve the needs of many researchers and genealogists. In the Heritage Gallery, you can take the time to discover the creative minds of local artists, while browsing through many displays of arts and crafts. A most genuinely hospitable welcome awaits you!

Hours of Operation

The Tweed Heritage Centre is open Monday through Saturday, 9am to 12noon, 1pm to 5pm, year round.

Admission is \$3.00 per person over 12 years of age.

Contact Information

Address: 40 Victoria St. N., Box 665, Tweed, ON K0K 3J0

Phone: (613) 478-3989

Website: <http://www.tweedheritage.com>

Driving Directions

From Toronto or Kingston, take Hwy 401 to Belleville. Go half hour North on Hwy# 37 to Tweed. From Ottawa or Peterborough, take Hwy# 7 to Hwy# 37. Go 5 minutes South into Tweed.

Stirling

Hastings County Agricultural Museum



The Hastings County Museum of Agricultural Heritage recognizes and preserves the agricultural heritage by displaying and demonstrating artifacts in a living environment which will emphasize their educational and nostalgic value.

While visiting the museum, you will experience what it was like to be inside an historic dairy barn, a cheese factory (which was the heart of any dairy community), a creamery where butter was made, and a butter and milk storage room. Go back in time to a typical farm kitchen and parlour room, realistically reconstructed. There are also many other displays reproduced in the rich details of the period. Another area of our museum houses a superb collection of working antique tractors and many pieces of functional farm machinery.

Hours of Operation

Open Victoria Day Weekend until Labour Day Weekend
10am to 4pm, 7 days a week

Contact Information

Address: Stirling Fair Grounds, 437 Front Street West, Stirling, ON K0K 3E0
Phone: (613) 395-0015
Email: agmuseum@reach.net
Website: www.agmuseum.ca

Driving Directions

Stirling is located 25 minutes North West of Belleville on Hwy# 62 and 14. The Museum is located in the west side of Stirling at the Fair grounds.